

See discussions, stats, and author profiles for this publication at: <https://www.researchgate.net/publication/334324681>

LC-MS/MS METHOD DEVELOPMENT AND VALIDATION FOR THE DETERMINATION OF CARDIAZOL IN HUMAN PLASMA

Article in *International Journal of Applied Pharmaceutics* · June 2019

DOI: 10.22159/ijap.2019v11i4.33482

CITATIONS

2

READS

89

5 authors, including:



Iryna Drapak

Danylo Halytsky Lviv National Medical University

36 PUBLICATIONS 81 CITATIONS

SEE PROFILE



Lina Perekhoda

National University of Pharmacy

68 PUBLICATIONS 153 CITATIONS

SEE PROFILE



Sergiy Ivanovich Kovalenko

Zaporozhye State Medical University

195 PUBLICATIONS 531 CITATIONS

SEE PROFILE



Liliya Logoyda

Ivan Horbachevsky Ternopil National Medical University

93 PUBLICATIONS 405 CITATIONS

SEE PROFILE

Some of the authors of this publication are also working on these related projects:



Development and testing of new analytical methods and validation of analytical and bioanalytical methods [View project](#)



Quantum and Chemical Calculations [View project](#)

LC-MS/MS METHOD DEVELOPMENT AND VALIDATION FOR THE DETERMINATION OF CARDIAZOL IN HUMAN PLASMA

IRYNA DRAPAK¹, BORYS ZIMENKOVSKY², LINA PEREKHODA³, SERGIY KOVALENKO⁴, LILIYA LOGOYDA^{5*}

¹General, Bioinorganic, Physical and Colloidal Chemistry Department, Danylo Halytsky Lviv National Medical University, Lviv City, Ukraine, ²Pharmaceutical, Organic and Bioorganic Chemistry Department, Danylo Halytsky Lviv National Medical University, Lviv City, Ukraine, ³Medicinal Chemistry Department, National University of Pharmacy, Kharkiv City, Ukraine, ⁴Organic and Bioorganic Chemistry Department, Zaporizhzhya State Medical University, Zaporizhzhya City, Ukraine, ⁵Pharmaceutical Chemistry Department, Pharmaceutical Faculty, I. Horbachevsky Ternopil State Medical University, Ternopil City, Ukraine
Email: logojda@tdmu.edu.ua

Received: 06 Apr 2019, Revised and Accepted: 01 Jun 2019

ABSTRACT

Objective: The main purpose of this study was to develop a simple, precise, rapid and accurate method for the quantification of cardiazol in human plasma.

Methods: Chromatography was achieved on Discovery C18, 50 × 2.1 mm, 5 μm column. Samples were chromatographed in a gradient mode (eluent A (acetonitrile-water-formic acid, 5: 95: 0.1 v/v), eluent B (acetonitrile-formic acid, 100: 0.1 v/v)). The initial content of the eluent B of 8%, which increases linearly to 1.0 min to 100%, is maintained up to 1.5 min and returned to the original 8% to 1.51 min. The mobile phase was delivered at a flow rate of 0.400 ml/min into the mass spectrometer ESI chamber. The sample volume was 300 μl.

Results: The total chromatographic run time was 2.5 min and the elution of cardiazol and IS (difenconazole) occurred at ~2.15 and 1.98 min, respectively. A linear response function was established at 1-100 ng/ml for cardiazol and difenconazole in human plasma. The % mean recovery for cardiazol in LQC, MQC and HQC was 102.8 %, 100.3 % and 95.9 %. The lowest concentration with the RSD < 20% was taken as LLOQ and was found to be 1.10 ng/ml for cardiazol. The % accuracy of LLOQ samples prepared with the different biological matrix lots was found 109.7 %, which were found within the range of 80.00-120.00 % for the seven different plasma lots. % CV for LLOQ samples was observed as 11.9 %, which are within 20.00% of the acceptance criteria.

The within-run coefficients of variation ranged between 0.311 % and 0.601 % for cardiazol. The within-run percentages of nominal concentrations ranged between 99.80 % and 100.41 % for cardiazol. The between-run coefficients of variation ranged between 0.332 % and 0.615 % for cardiazol. The between-run percentages of nominal concentrations ranged between 98.18 % and 101.21 % for cardiazol.

Conclusion: A rapid method was developed for simultaneous determination of cardiazol in human plasma. The method was strictly validated according to the ICH guidelines. Acquired results demonstrate that the proposed strategy can be effortlessly and advantageously applied for routine examination of cardiazol in human plasma.

Keywords: LC-MS/MS, Cardiazol, Human plasma, Validation, Pharmacokinetic studies

© 2019 The Authors. Published by Innovare Academic Sciences Pvt Ltd. This is an open access article under the CC BY license (<http://creativecommons.org/licenses/by/4.0/>)
DOI: <http://dx.doi.org/10.22159/ijap.2019v11i4.33482>

INTRODUCTION

Bioanalytical methodology is the founder of the study of bioequivalence and therapeutic drug monitoring, so the main focus in the study of pharmacokinetics and bioequivalence should be given to the development of bioanalytical methods of analysis. Bioanalytical method validation employed for the quantitative determination of drugs and their metabolites in biological fluids plays a significant role in the evaluation and interpretation of bioavailability, bioequivalence, pharmacokinetic, and toxicokinetic study data [1]. These studies generally support regulatory filings. The quality of these studies is directly related to the quality of the underlying bioanalytical data.

Cardiazol (fig. 1) (hydrobromide [3-Allyl-4-(4¹-methoxyphenyl)-3H-thiazole-2-ylidene]-(3²-trifluoromethylphenyl) amine)-the original newly synthesized cardioprotective, which, in addition to the cardioprotective effect, also exhibits hypolipidemic, anti-inflammatory, analgesic and antioxidant activity [2]. This indicates the promise of this substance for further preclinical studies.

Therefore, it was thought desirable to develop a simple, accurate, cheap and fast procedure that could be applied for the determination of cardiazol in human plasma, this study performed assay validations as per guidelines [3-5]. While this method with validation details was economical and applied for pharmacokinetic studies of cardiazol.

MATERIALS AND METHODS

Chemicals and reagents

Cardiazol (purity 98.5 %) was synthesized by us, difenconazole (Internal Standard) (purity 98.8 %) was purchased from Moehs Catalana, S. L., Spain, Zhejiang Huahai Pharmaceutical Co., Ltd, KHP, EDQM-Council of Europe. HPLC grade acetonitrile and methanol were purchased from CHROMASOLV, HPLC grade formic acid was purchased from Fluka. All other chemicals and reagents were of analytical grade. Microcaps® disposable micropipettes (50 μl, catalog number: 1-000-0500) were purchased from Drummond Scientific Company, USA. The control of human dipotassium ethylenediaminetetraacetic acid (K₂EDTA) plasma sample was procured from Red Cross Society, Ukraine.

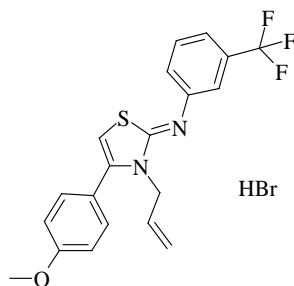


Fig. 1: Chemical structure of cardiazol

Instrumentation and chromatographic conditions

A Shimadzu HT (Shimadzu, Japan) LC system equipped with degasser (DGU-14A), binary pump (LC-20ADXR) along with auto-sampler (SIL-20AC HT) was used to inject 5 μ l aliquots of the processed samples on Discovery C18, 50 \times 2.1 mm, 5 μ m column maintained at 25 \pm 1 $^{\circ}$ C. Samples were chromatographed in a gradient mode (eluent A (acetonitrile-water-formic acid, 5: 95: 0.1 v/v),

eluent B (acetonitrile-formic acid, 100: 0.1 v/v)). Samples were chromatographed in gradient mode. The initial content of the eluent B of 8%, which increases linearly to 1.0 min to 100%, is maintained up to 1.5 min and returned to the original 8% to 1.51 min. The mobile phase was delivered at a flow rate of 0.400 ml/min into the mass spectrometer ESI chamber. Parameters of electrospray ionizer and MRM parameters are listed in table 1-2. The analytical data were processed by Analyst Software (version 1.5.2).

Table 1: Parameters of ionizer electrospray

S. No.	Parameter	Value
1	Polarity	Positive
2	Nebulizer Gas (NEB, Gas 1)	15
3	Curtain Gas (CUR)	8
4	Collision Gas (CAD)	4
5	IonSpray Voltage (IS)	5000
6	Temperature (TEM)	400
7	Turbo IonSpray Gas	8
8	Horizontal Position	8.0
9	Lateral Position	2.0

Table 2: Multiple reaction monitoring (MRM) parameters

ID	Parent, m/z	Daughter, m/z	Time, ms	DP, V	EP, V	CE, V	CXP, V
Cardiazol	391.018	360.1	40	46	11	35	20
Difenoconazole	406.100	251.2	40	61	11	35	20

*Abbreviations: DP, declustering potential; FP, focusing potential; EP, entrance potential; CE, collision energy; CXP, collision cell exit potential

Standard solutions

Cardiazol and IS were weighed accurately into volumetric flasks using an analytical microbalance. Approximately 1 mg/ml primary stock solutions of cardiazol and 1 mg/ml primary stock solutions of difenoconazole (IS) solutions were prepared in methanol. The stock solutions were stored at -20° C, which was found to be stable for 1 mo. The stock solutions of cardiazol and difenoconazole were successively diluted with methanol and water to prepare secondary stocks and working solutions. Secondary stock solutions and working solutions were used to prepare calibration curve (CC) and quality control (QC) samples. Working stock solutions were stored at 4 $^{\circ}$ C for a week. Working stocks were used to prepare plasma calibration standards. A working IS solution (50 ng/ml) was prepared in acetonitrile: methanol (50:50 v/v). Blank human plasma was screened before spiking to ensure that it was free from endogenous interference at retention times of cardiazol and difenoconazole, respectively. Calibration standards' samples (1-100 ng/ml for cardiazol and difenoconazole) were prepared by spiking the blank human K₂EDTA plasma with appropriate concentration of cardiazol.

Samples for the determination of precision and accuracy were prepared by spiking control human plasma in bulk with cardiazol at appropriate concentrations (for cardiazol 3.00 ng/ml low QC [LQC], 30.00 ng/ml medium QC [MQC], and 75.00 ng/ml high QC [HQC]) and 120 μ l plasma aliquots were distributed into different tubes. All the samples were stored at -80° C \pm 10 $^{\circ}$ C.

Sample preparation

A simple protein precipitation extraction method was followed for extraction of cardiazol from human plasma. From the deep freezer, the required quantities of CC standards and QC samples were withdrawn. The samples were thawed at room temperature. To an aliquot of 100 μ l plasma, 20 μ l of IS was added. To this mixture, 300 μ l of acetonitrile: methanol (50:50 v/v) was added and vortexed for 2 min, followed by centrifugation at 6000 rpm for 5 min at 4 $^{\circ}$ C. After centrifugation, approximately 50 μ l supernatant was aliquoted into, respectively, labeled autosampler vials, which were later placed in the autosampler at 15 $^{\circ}$ C \pm 4 $^{\circ}$ C. 10 μ l of the sample was injected onto LC-MS/MS system for analysis.

Method validation

A full validation according to the ICH guidelines was performed for the assay in K₂EDTA human plasma.

Specificity and selectivity

The specificity of the method was evaluated by analyzing human plasma samples from different lots to investigate the potential interferences at the chromatographic peak region for cardiazol and IS. The acceptance criterion for the experiment was that should have <20% area response to that of the LLOQ level response in the same matrix. Two lots of hemolyzed plasma samples were also analyzed to ensure specificity against potential biological interferences.

Linearity

The points CC (1-100 ng/ml) were constructed by plotting the peak area ratio of analyte: IS against the nominal concentration of calibration standards in K₂EDTA human plasma. Following the evaluation of different weighting factors, the results were fit into linear regression analysis using 1/X² (X: Concentration) weighting factor. The CC should have a correlation coefficient (r) of 0.99 or better. The acceptance criteria for each back-calculated standard concentration were \pm 15% deviation from the nominal value except at LLOQ, which was set at \pm 20%.

Recovery

The efficiency of cardiazol and IS extraction from human plasma was determined by comparing the responses of the analytes extracted from replicate QC samples (n=6) with those of neat standard solutions spiked in post-extracted plasma blank sample at equivalent concentrations by protein precipitation extraction method. Recovery of cardiazol was determined at LQC (3.00 ng/ml) and HQC (75.00 ng/ml) concentrations, whereas the recovery of IS was determined at a single concentration of 20 ng/ml.

Matrix effect

The effect of human plasma constituents over the ionization of cardiazol and IS was determined by post-column infusion method to evaluate matrix effect. Briefly, an infusion pump delivers a constant amount of analyte into LC system outlet entering to mass spectrometer inlet. To follow the analyte signal, the mass spectrometer was operated in MRM mode. The human plasma constituent sample extract was injected on LC column. A steady ion response was obtained as a function of time since the analyte was infused at a constant rate. Any endogenous compound that elutes from the column which causes a variation in ESI response of the infused analyte was seen as suppression or enhancement in the

response of the infused analyte. A separate experiment was performed with cardiazol and IS solutions, which were infused at a constant rate, and blank matrix sample injected through the LC. To evaluate matrix effect, different lots of human plasma were spiked with analyte concentration levels at LQC and HQC levels. According to guidelines, the acceptance criterion for each back-calculated concentration was $\pm 15\%$ deviation from the nominal value.

Precision and accuracy

The intra-assay precision and accuracy were estimated by analyzing six replicates containing cardiazol at four different QC levels in human plasma. The four-level QC samples on four different runs were performed to assess the interassay precision. The acceptance criteria for each back-calculated standard concentration were 85-115% accuracy from the nominal value except at LLOQ, which was set at 80-120%.

Stability experiments

Stability tests were conducted to evaluate the stability of cardiazol in plasma samples under different conditions. 8 h bench top stability, processed samples stability (autosampler stability for 26 h at 10 °C), three cycles of freeze-thaw stability, 30 d of long-term stability at -80 ± 10 °C were performed at LQC and HQC levels using six replicates at each level. Samples were considered stable if assay values' acceptance criterion was of accuracy (i.e., 85-115% from fresh samples) and precision (i.e., $\pm 15\%$ relative standard deviation [RSD]).

RESULTS AND DISCUSSION

Cardiazol is original newly synthesized cardioprotective. That's why previously was no any bioanalytical method development for cardiazol. But aim of our work was also to develop rapid, sensitive, and highly selective liquid chromatography-tandem mass spectrometry method for cardiazol and improve method development for all derivatives of thiazole.

In the present study, optimization and critical evaluation of mobile phase composition (gradient), flow rate, and analytical column were important to obtain a good resolution of peaks of interest from the

endogenous components, which in turn affect reproducibility and sensitivity of the method. Selection of chromatographic conditions for the proposed method was optimized to suit the preclinical pharmacokinetic studies. To ease the sample preparation in microtubes and to reduce the usage of solvent, the plasma volume was kept low. Initial feasibility experiments of a various mixture(s) of solvents such as acetonitrile, methanol and formic acid along with altered flow rates (in the range of 0.1-0.6 ml/min) were performed to optimize an effective chromatographic resolution of cardiazol and IS. Various analytical columns were tested to obtained good and reproducible response within the short run time. The resolution of peaks was best achieved with Discovery C18, 50 × 2.1 mm, 5 μm column. Samples were chromatographed in a gradient mode (eluent A (acetonitrile-water-formic acid, 5: 95: 0.1 v/v), eluent B (acetonitrile-formic acid, 100: 0.1 v/v)). The initial content of the eluent B of 8%, which increases linearly to 1.0 min to 100%, is maintained up to 1.5 min and returned to the original 8% to 1.51 min. The mobile phase was delivered at a flow rate of 0.400 ml/min into the mass spectrometer ESI chamber. The injection volume was 300 μl.

The purpose of sample extraction optimization is mainly to achieve high extraction recovery with negligible or low matrix effects to improve the sensitivity and reliability of LC-MS/MS analysis [6-11]. A poor extraction procedure decreases method robustness due to the presence of endogenous interference in the sample extracts, which are not efficiently cleaned up due to poor extraction procedure decreases the method robustness due to the endogenous interference in the sample extracts. With time-saving advantage and simplicity, the protein precipitation extraction method was chosen as an extraction method. The attained LLOQ was sufficient to quantify cardiazol in low-dose pharmacokinetic studies.

Cardiazol eluted at ~2.15 min, respectively. During a direct infusion experiment, the mass spectra for cardiazol and IS revealed peaks at m/z 391.08 and 406.100, respectively as protonated molecular ions, $[M+H]^+$. Typical multiple reaction monitoring chromatograms of cardiazol and internal standard in dipotassium ethylenediaminetetraacetic acid human blank plasma are shown in fig. 2.

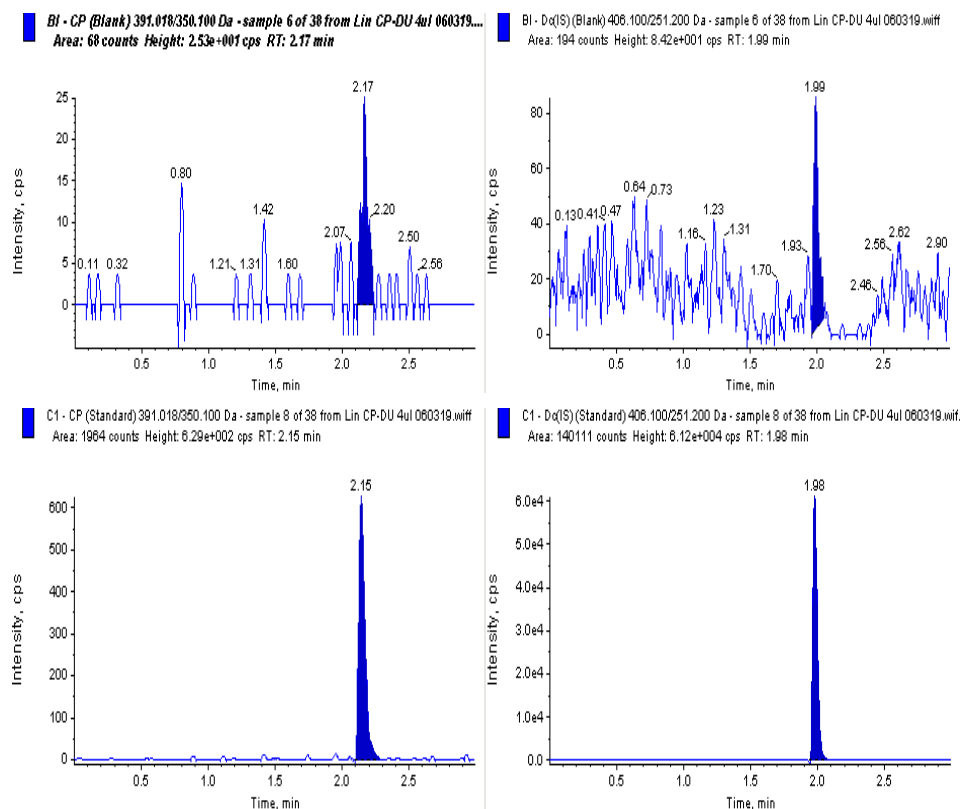


Fig. 2: Typical multiple reaction monitoring chromatograms of cardiazol (left) and internal standard (difeniconazole) (right) in dipotassium ethylenediaminetetraacetic acid human blank plasma

The total chromatographic run time was 2.5 min and the elution of cardiazol and IS (difenocanazole) occurred at ~2.15 and 1.98 min, respectively.

Specificity

Different lots of plasma were analysed to ensure that no endogenous interferences were present at the retention time of cardiazol LLOQ

level samples along with plasma blank from the respective plasma lots were prepared and analysed (table 3).

Linearity

The calibration standard curves had a reliable reproducibility over the standard concentrations across the calibration range. The average regression (n=3) was found to be >0.99 for an analyte.

Table 3: Results of specificity for cardiazol

S. No.	Enalapril STD BL	LLOQ		% Interference
		Area	RT	
1	0	2031	2.15	NIL
2	0	2033	2.14	NIL
3	0	2039	2.15	NIL
4	0	2029	2.14	NIL
5	0	2038	2.14	NIL
6	0	2032	2.14	NIL
7	0	2030	2.15	NIL
8	0	2042	2.15	NIL
9	0	2029	2.15	NIL
10	0	2031	2.15	NIL

*Average of triplicate injections, In all plasma blanks, the response at the retention time of cardiazol was less than 20% of LLOQ response and at the retention time of IS, the response was less than 5% of mean IS response in LLOQ.

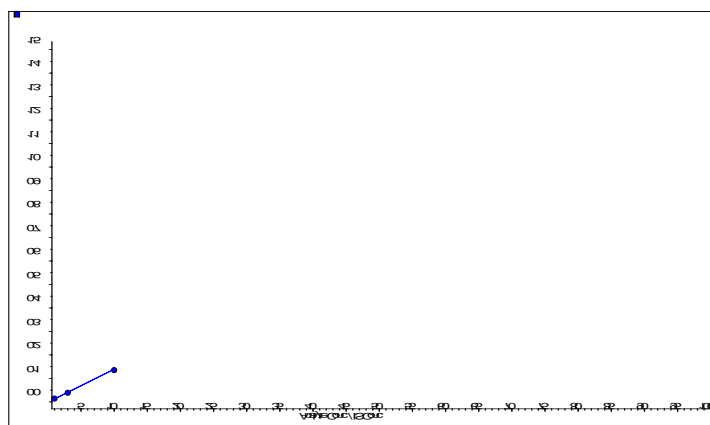


Fig. 3: The calibration curve of cardiazol in human plasma

The calibration curve (fig. 3) (peak area ratio Vs Concentration) was linear over working range for cardiazol of 1 to 100.00 ng/ml with 7 point calibration used for quantification by linear regression, shown in fig. 3. The regression equation for the analysis was

$y=0.0141x+0.00146$ with coefficient of correlation (r^2) = 0.9985.

Recovery

The % mean recovery for cardiazol in LQC, MQC and HQC are listed in table 4.

Table 4: The % mean recovery of cardiazol for LQC, MQC and HQC

S. No.	LQC	MQC	HQC
1	2.97	28.4	76.6
2	3.14	29.6	71.3
3	3.10	31.5	70.6
4	3.08	30.2	69.7
5	3.13	30.7	71.3
Mean	3.08	30.1	71.9
SD	0.069	1.14	2.69
% CV	2.2	3.8	3.7
% Mean Recovery	102.8	100.3	95.9

***Abbreviations:** Lower quality control (LQC), middle-quality control (MQC), higher quality control (HQC)

Each value is represented as a mean±SD of 5 observations (n=5), SD: Standard Deviation, RSD: Relative Standard Deviation, #Acceptance criteria<15 %.

The % mean recovery for cardiazol in LQC, MQC and HQC was 102.8 %, 100.3 % and 95.9 %.

Intraday (within run) and Inter-day (between run) precision and accuracy

The within-run coefficients of variation ranged between 0.311 % and 0.601 % for cardiazol. The within-run percentages of nominal concentrations ranged between 99.80 % and 100.41 % for cardiazol. The between-run coefficients of variation ranged between 0.332 % and 0.615 % for cardiazol. The between-run percentages of nominal

concentrations ranged between 98.18 % and 101.21 % for cardiazol.

Results are presented in table 5.

Table 5: Intra-day and Inter-day precision data of cardiazol

Day	Intra-day precision		Inter-day precision	
	Mean	RSD %	Mean	RSD %
1	99.80	0.378	101.21	0.332
2	100.41	0.601	98.18	0.390
3	100.23	0.311	100.13	0.615

*Each value is represented as a mean±SD of observations, SD: Standard Deviation, RSD: Relative Standard Deviation, #Acceptance criteria<15 %. The assay values on both the occasions (intra-and inter-day) were found to be within the accepted limits.

Table 6: Results of matrix effect of cardiazol

S. No.	LLQC
1	1.07
2	1.15
3	1.26
4	1.10
5	0.903
Mean	1.10
SD	0.130
% CV	11.9
% Mean Recovery	109.7

Matrix effect

The lowest concentration with the RSD<20% was taken as LLOQ and was found to be 1.10 ng/ml for cardiazol. Results are presented in tables 6.

***Abbreviations:** Lower limit of quantification (LLOQ)

Each value is represented as a mean±SD of 5 observations (n=5), SD: Standard Deviation, RSD: Relative Standard Deviation, #Acceptance criteria<20 %.

The % accuracy of LLOQ samples prepared with the different biological matrix lots was found 109.7 %, which were found within the range of 80.00-120.00 % for the seven different plasma lots. % CV for LLOQ samples was observed as 11.9 %, which are within 20.00% of the acceptance criteria.

Stability

The predicted concentrations for cardiazol (3.00 ng/ml and 75.00 ng/ml) deviated within±15% of the fresh sample concentrations in a battery of stability tests namely, in-injector (22 h), bench-top (7 h), and repeated four freeze/thaw cycles stability (table 7).

Table 7: Stability data of cardiazol at QCs in human plasma

Nominal concentration (ng/ml)	Stability	Stability data		
		mean±SD °(n=6)	Accuracy (%)•	Precision (% CV)
Cardiazol-3.00	0 h	3.10±0.43	99.6	2.24
	7 h (bench-Top)	3.01±0.37	99.6	2.14
	22 h (in-injector)	3.00±0.39	99.3	2.26
	3 FT cycles	3.09±0.41	99.9	2.16
Cardiazol-75.00	0 h	75.2±0.39	99.8	2.67
	7 h (bench-Top)	75.4±0.21	99.9	2.31
	22 h (in-injector)	75.4±0.22	99.9	2.31
	3 FT cycles	75.5±0.31	99.1	3.06

°Back-calculated plasma concentrations; •Mean assayed concentration/mean assayed concentration at 0 h × 100. FT: Freeze-thaw, SD: Standard deviation, QC: Quality control, The results were found to be within the assay variability limits during the entire process.

CONCLUSION

A highly sensitive, specific, reproducible, rapid and high-throughput LC-MS/MS assay was developed and validated to quantify cardiazol in human plasma as per the regulatory guidelines. The present method involved a simple precipitation method of sample preparation, which gave consistent and reproducible recoveries. Acquired results demonstrate that the proposed strategy can be effortlessly and advantageously applied for routine examination of cardiazol in human plasma. The combination was taken up for developing a bioanalytical method development and validation so that further it would be useful for performing pharmacokinetic studies.

AUTHORS CONTRIBUTIONS

All the authors have contributed equally

CONFLICT OF INTERESTS

The authors declare no conflict of interest

REFERENCES

1. <https://www.omicsonline.org>. [Last accessed on 01 May 2019]
2. Perekhoda LO, Drapak IV, Suleiman MM, Sych IA, Yaremenko VD. Synthesis and *in silico* research of derivatives of 3-allyl-4-(R-phenyl)-N-(R1-phenyl)thiazole-2-imine. Der Pharma Chemica 2017;9:95-8.
3. Guideline on Bioanalytical method validation: European Medicines Agencies; 2011.
4. Sonawane LV, Poul BN, Usnale SV. Bioanalytical method validation and its pharmaceutical application a review. Pharm Anal Acta 2014;5:1-7.
5. Pushpa Latha E, Sailaja B. Bioanalytical method development and validation by HPLC: a review. J Appl Pharm 2014;1:1-9.
6. Liliya Logoyda. Bioanalytical method development and validation from the simultaneous determination of verapamil and enalapril in the presence of enalaprilat by HPLC MS/MS. Int J Appl Pharm 2018;10:19-27.

7. Liliya Logoyda. A HPLC-MS/MS method development and validation for the simultaneous determination of nifedipine and enalapril in human plasma. *Int J Appl Pharm* 2018;10:35-42.
8. Ghosh C, Jain I, Shinde CP, Chakraborty BS. Rapid and sensitive liquid chromatography/tandem mass spectrometry method for simultaneous determination of enalapril and its major metabolite enalaprilat, in human plasma: application to a bioequivalence study. *Drug Testing Anal* 2012;4:94–103.
9. Logoyda L, Kondratova Y, Korobko D, Susla O, Soroka Y, Tsytsiura R, *et al.* Youden's test of the chromatographic determination of captopril in pharmaceuticals. *Int J Green Pharm* 2017;11:188-91.
10. Liliya Logoyda, Dmytro Korobko, Oleksandra Oleshchuk, Taras Proniv, Mariya Dmutriv. A HPLC MS/MS method development and validation for the simultaneous determination of bisoprolol and enalapril in the presence of enalaprilat in human plasma. *Int J Appl Pharm* 2018;10:31-40.
11. Bhardwaj SP, Singh S. Study of the forced degradation behavior of enalapril maleate by LC and LC-MS and development of a validated stability-indicating assay method. *J Pharm Biomed Anal* 2008;46:113–20.